

(Optional AX-SD Service Disconnect)

Supplier of choice

Landis+Gyr's objective is to be the supplier of choice for solid-state, residential and AMR metering solutions. We offer the FOCUS™ family of metering products to provide the utility industry with a reliable, economical, quality, solid-state meter and platform for AMR.

Cutting edge technology

A single circuit board design, mounted at the front of the meter, allows room for modular AMR communications or a KYZ option output board. Fewer parts and connectors throughout the board design increase reliability and contribute to better overall endpoint performance. Highly accurate load performance and the use of a field-proven Digital Multiplication Measurement Technique ensure reliability and dependability during the entire life of the FOCUS meter.

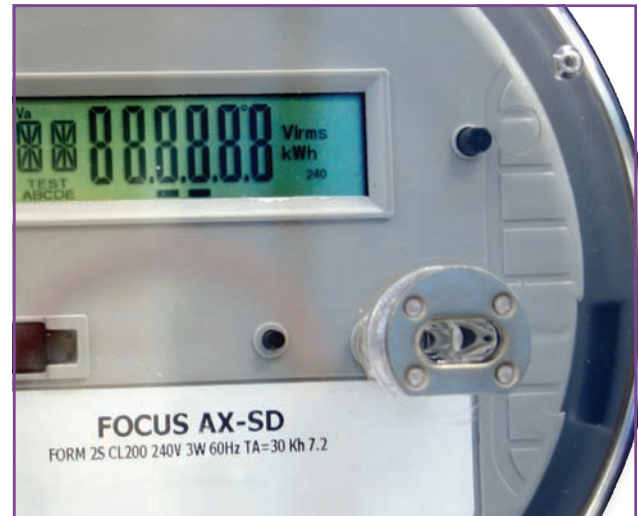
With the Service Disconnect factory available option, there is a 200A relay integrated within the meter base. The combination of the FOCUS Service Disconnect base module and powerful AX register provides a flexible system that supports a variety of connect/disconnect and service-limiting applications.

Flexibility

Meter reconfiguration can be accomplished optically through the configuration port located on the front cover.

- Select from displayable positive, negative, net and added (security) metrics
- Change the displayed information, order or digits
- Configure a CT/PT meter multiplier to obtain a direct reading
- Preset or reset kWh
- Adjust calibration

Centered on your metering needs, with an emphasis on customer satisfaction, we are committed to providing the best metering solution in terms of capability, technology and affordability. By uniting our experience and technology with that of our strategic allies and development partners, we provide metering solutions that cover the range of utilities' residential metering needs.



Solution highlights:

- Digital Multiplication Measurement Technique
- Non-volatile memory
- Designed for a 20+ year life
- Meets or exceeds industry and ANSI standards
- Uses ANSI protocol (between meter and AMR device)
- 6 digit LCD and 3 Alpha ID

Product Specifications

General Specifications

Active Energy kWh/kW/TOU meter	Utilizes ANSI C12.19 protocol (between meter and AMR device)
Digital Multiplication Measurement Technique	9-Digit LCD
Non-Volatile Memory	Display scroll sequence programmable (factory or end user)
Designed for 20+ years life	Type 2 ANSI C12.18 optical port
Meets ANSI standards for performance	

Operating Temperature

-40°C to +85°C under cover

Nominal Voltage

120V & 240V

Operating Voltage

80% to 115% of Vn

Frequency

60Hz +/- 5%

Humidity

5% to 95% relative humidity (non condensing)

Power Consumption

Digital Power Indicator, DPI

Burden

< 1.9W Max

Starting Load

Class 200	0.050 Amp	Class 320	0.050 Amp
Class 100	0.025 Amp	Class 480	0.120 Amp
Class 20	0.005 Amp		

Starting Watts (Form 2S)

12W

Load Performance Accuracy

0.2

Available Forms FOCUS AX Advanced Function

Self-Contained	1S, 2S, 2SE, 12S, 25S
Transformer Rated	3S, 4S
K-Base	2K

Available Forms FOCUS AX-SD Advanced Function Service Disconnect

Self-Contained 1S, 2S, 12S

Display Options

Energy Metrics: +kWh, -kWh, NetkWh, and added kWh (Security)
Metric Display Format – 4x1, 4x10, 5x1, or 6x1

AMR Platform

Modular or Integrated

Selectable Meter Multiplier

Up to 240 (1200:5 CT)

Applicable Standards

ANSI C.12.1 - 2001 for electricity metering
ANSI C.12.10 - 1987 for watt-hour meters
ANSI C.12.20 - 1998 for solid-state electricity meters
ANSI C.12.19 - 1997 American National Standard, Utility Industry End Device Data Tables